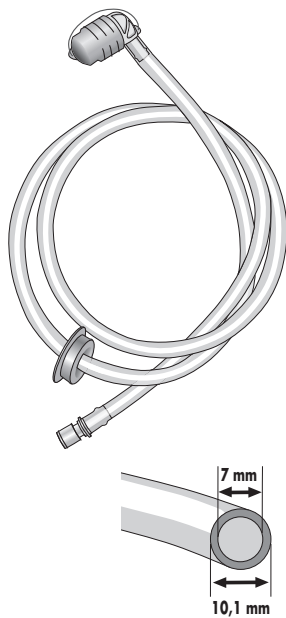


# HYDRATION SYSTEM

DE MONTAGEANLEITUNG  
 GB ASSEMBLY INSTRUCTIONS  
 FR INSTRUCTIONS DE MONTAGE  
 IT ISTRUZIONI DI MONTAGGIO

NL MONTAGE HANDLEIDING  
 DK MONTERINGSVEJLEDNING  
 ES INSTRUCCIONES DE MONTAJE  
 SE MONTERINGS ANVISNING

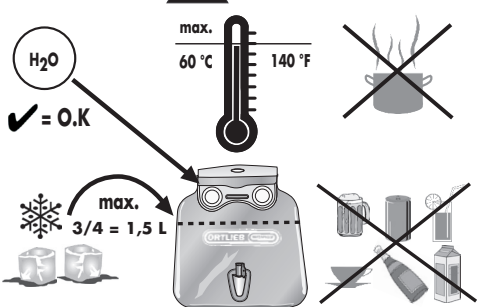
NO MONTERINGS ANVISNING  
 FI ASENNUSOHJEET  
 PL INSTRUKCJA MONTAŻU  
 JP 換気の良い所に保管してください。



BPA free ✓ = O.K.  
 LDA ✓ = O.K.

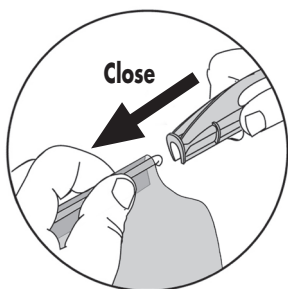


## 1. Notes



Caution: Never use boiling water. Do not scrub reservoir with abrasive materials.

## 2.3 Closing reservoir

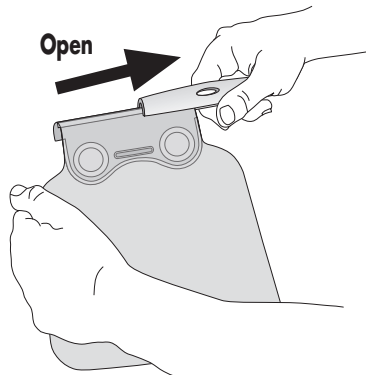


## 4. Valve use

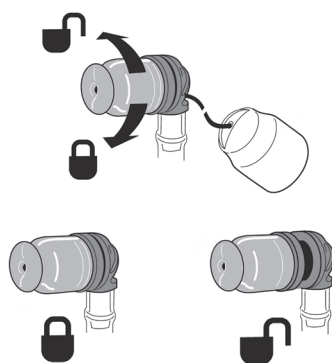
To get maximum flow bite gently on the bite zone.



## 2.1 Opening reservoir



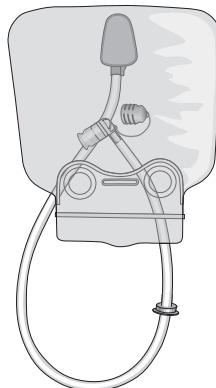
## 2.4 Valve use



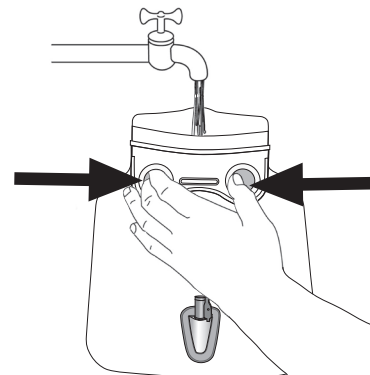
## 5.1 Drying reservoir

Drain reservoir completely and hang it upside down.

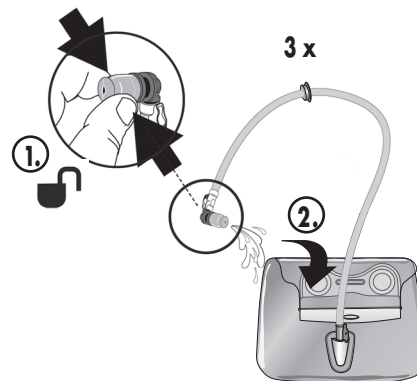
You may also use paper towels to dry the reservoir.



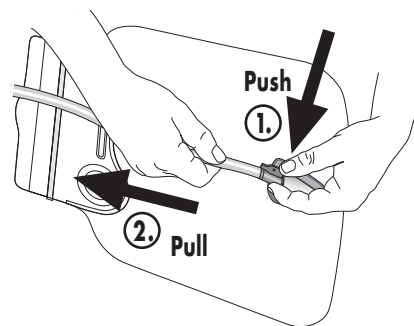
## 2.2 Filling reservoir



## 3. Clean before first use

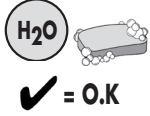


## 5.2 Disconnecting tube

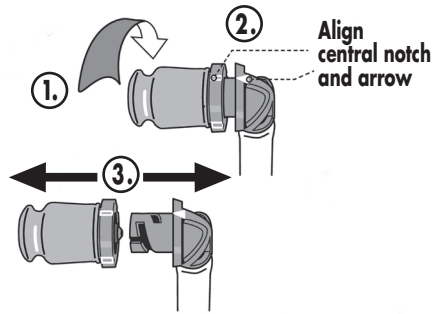


### 5.3 Cleaning reservoir

Wash with mild soapy water and rinse several times.

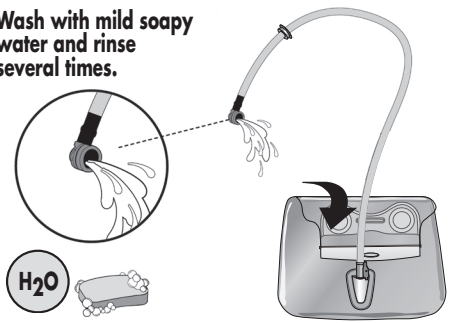


### 5.4 Cleaning valve

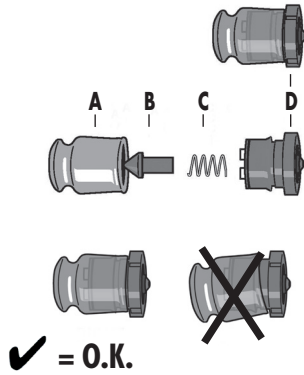


### 5.5 Cleaning tube

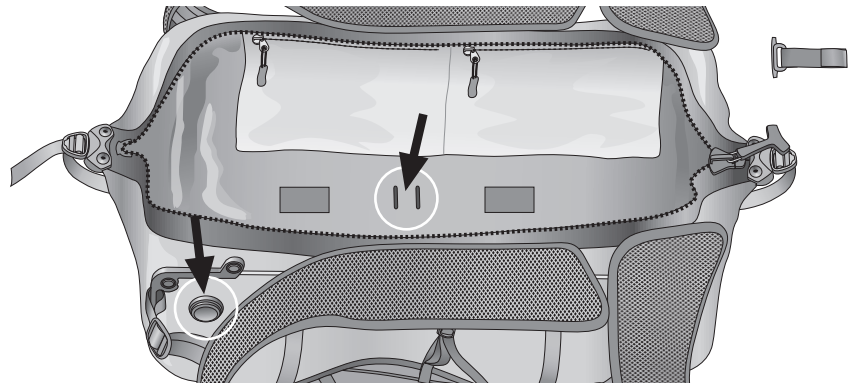
Wash with mild soapy water and rinse several times.



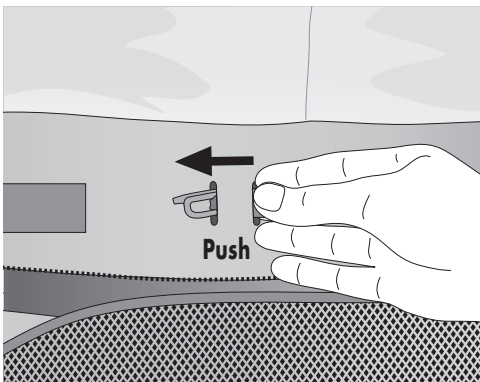
### 5.6 Cleaning if severely soiled



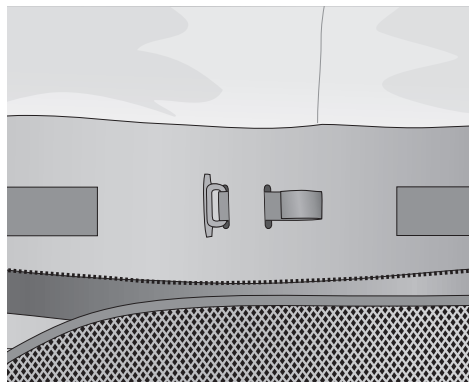
### 6.1 Attaching reservoir to backpack



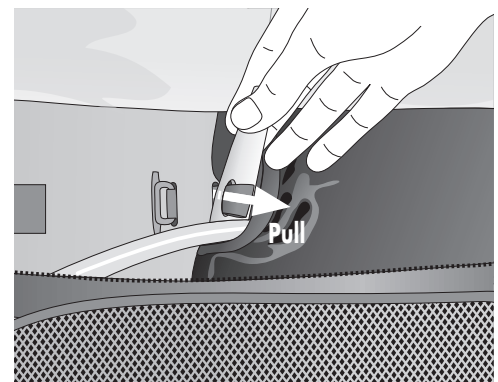
### 6.2 Attaching reservoir to backpack



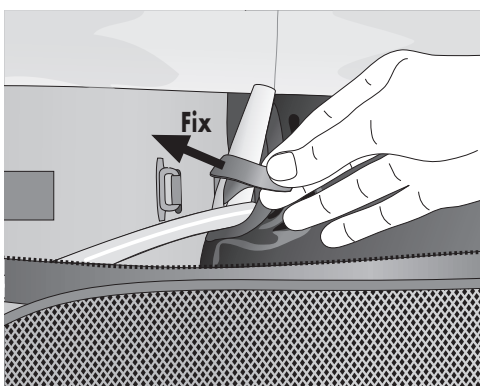
### 6.3 Attaching reservoir to backpack



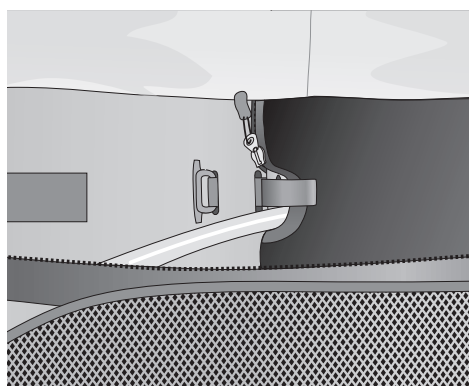
### 6.4 Attaching reservoir to backpack



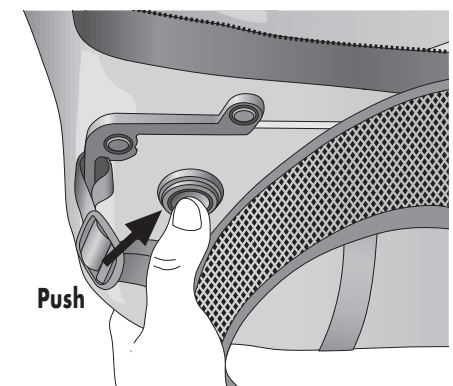
### 6.5 Attaching reservoir to backpack



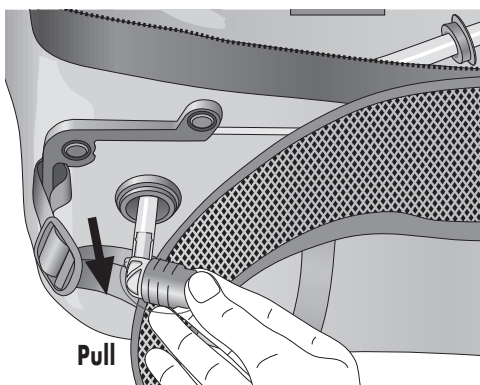
### 6.6 Attaching reservoir to backpack



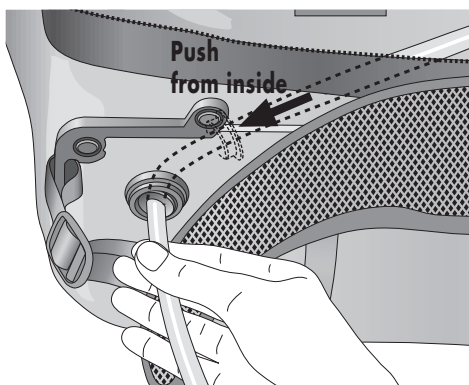
### 7.1 Attaching tube to backpack



### 7.2 Attaching tube to backpack



### 7.3 Attaching tube to backpack



### 7.4 Attaching tube to backpack

